



# Conta satélite da economia social - a questão estatística e o caso português

## Social Economy Satellite Account – the statistical issue and the Portuguese case

Conferências sobre Economia Social: Por um Plano de Ação Europeu para a Economia Social – Desafios e Prioridades

Câmara Municipal de Cascais | Cooperativa António Sérgio para a Economia Social (CASES)

13-14- julho

# Social Economy Satellite Account (SESA) 2016

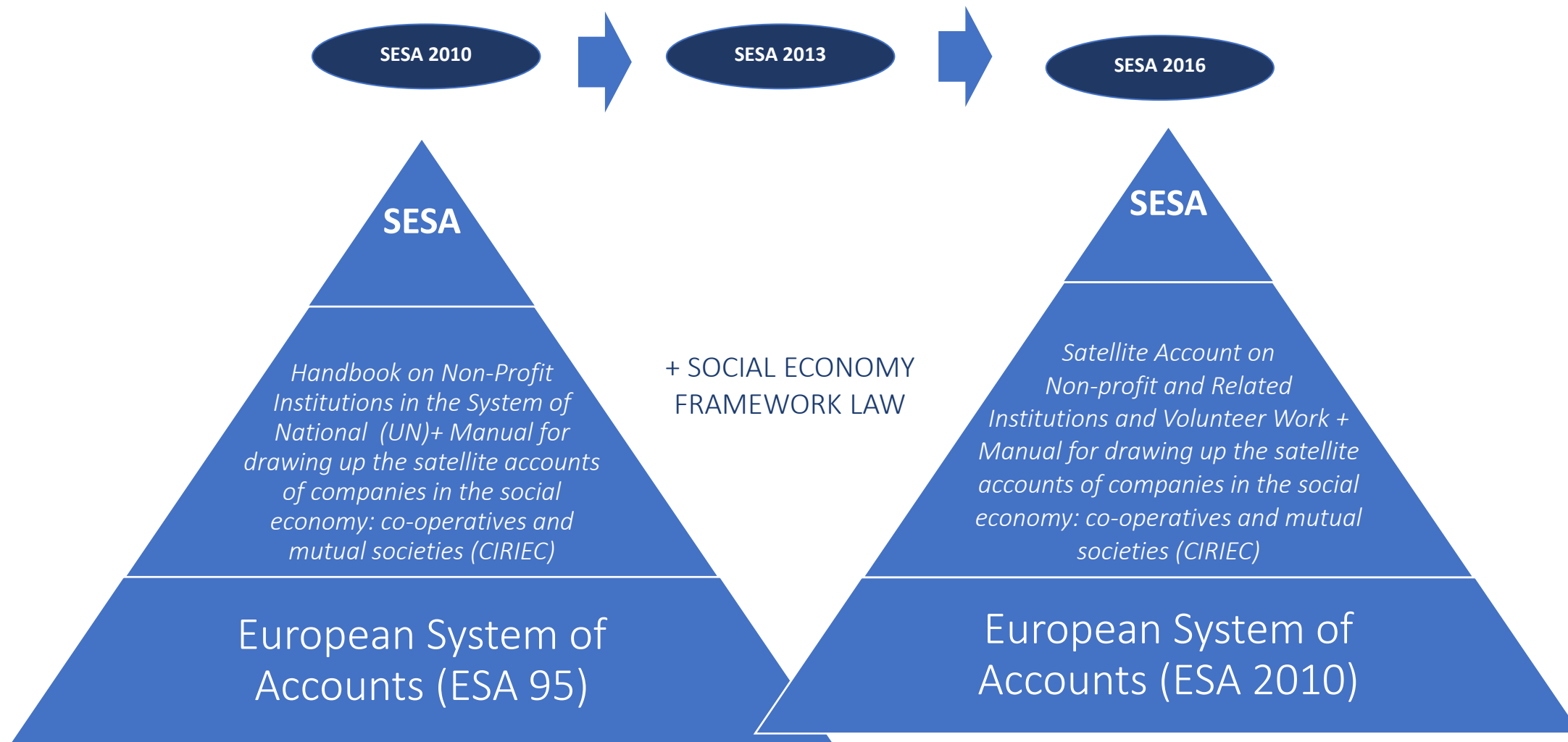
Project developed by Statistics Portugal in partnership with CASES - António Sérgio Cooperative for the Social Economy

Third edition (2010, 2013, 2016)

Statistical information for a thorough evaluation of the economic dimension and the main characteristics of the Social Economy (SE) in Portugal

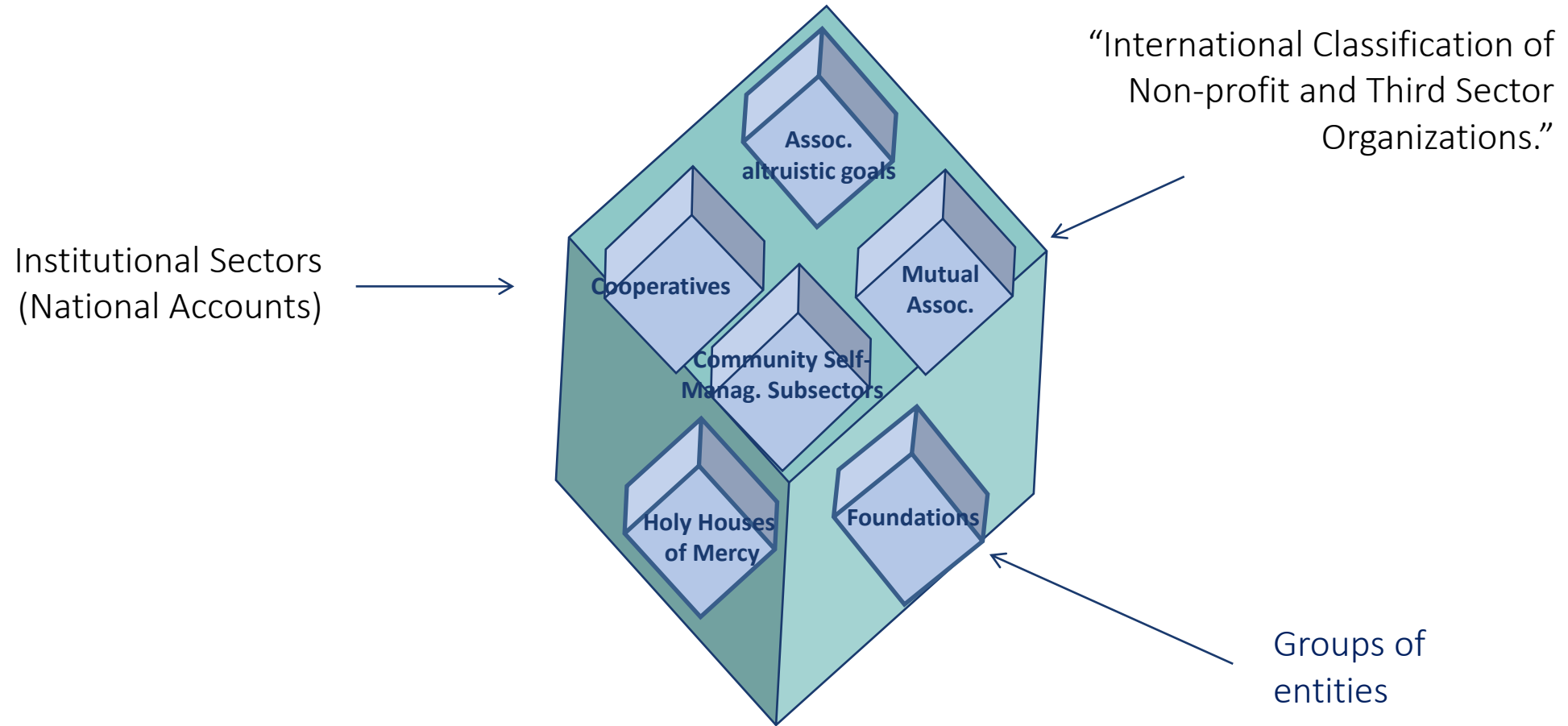
Integrated into the conceptual framework of the Portuguese National Accounts System (PNAS)

# Methodological framework



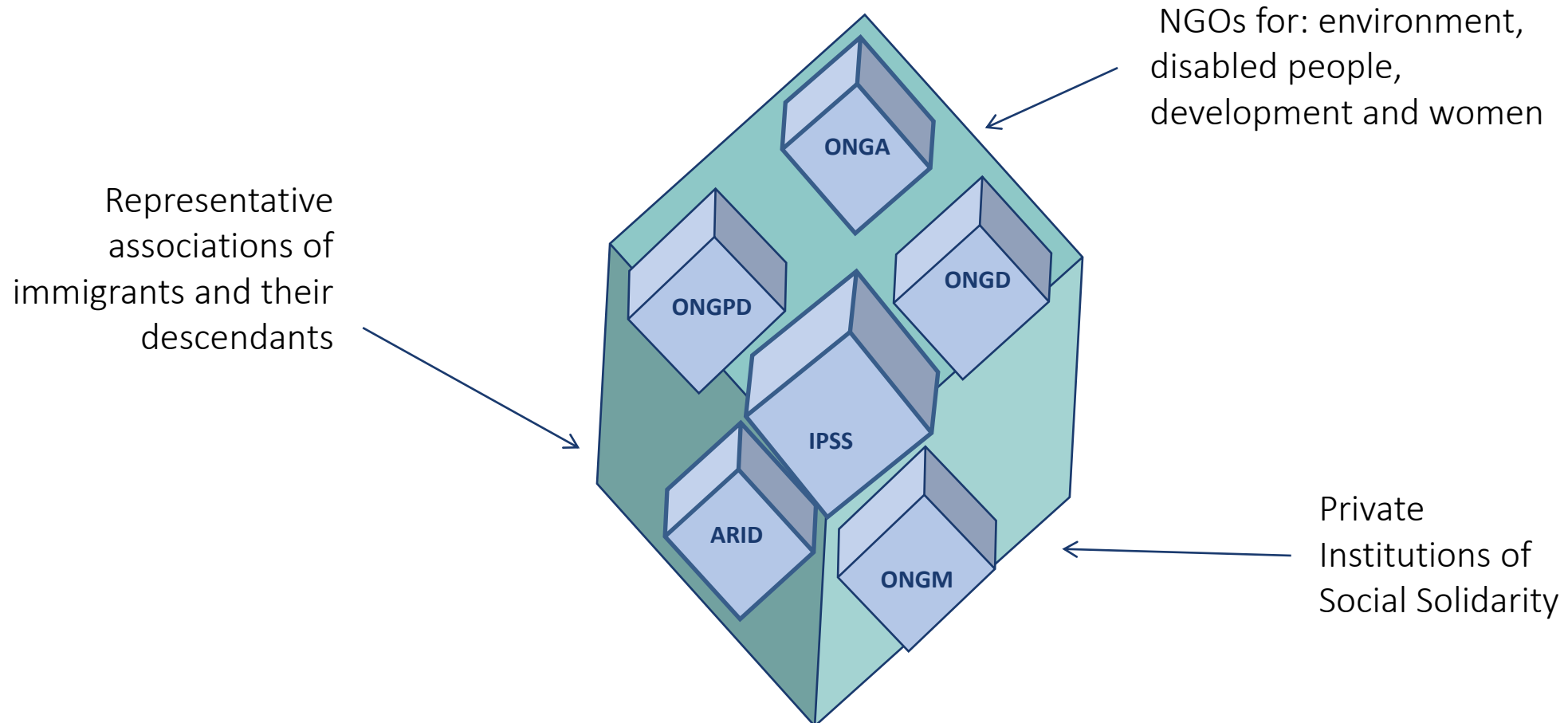
# Project conception: Modular approach

Multi - dimensional



# Project conception: Modular approach

## Special status



# Compilation and main data sources

- National Accounts
- General Register of Statistical Units

## Surveys

- Survey on employers associations, unions, federations and confederations
- Survey on Mutual Associations
- Labour Force Survey
- Survey of Fire Brigade entities
- Survey on environmental non-governmental organizations
- Survey on National Scientific and Technological Potential

## Other - mainly administrative

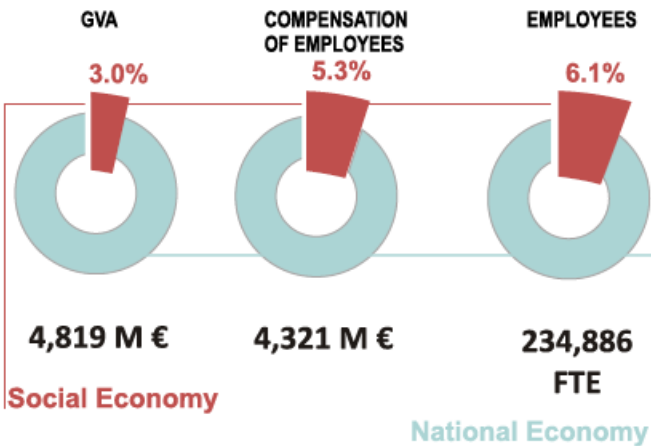
- Detailed financial information from the General government
- Archeevo data base from Secretaria-Geral of Ministry of Internal Affairs
- General Account of the State
- Social Security - Earnings monthly declaration
- Simplified Business Information
- Social Security lists
- Budgets and accounts of non-profit institutions
- Ministry of Labour, Solidarity and Social Security – Firms' Single Report
- Ministry of Justice
- Financial statements of the cooperatives accredited by CASES

Guiding principles of Social Economy



## MAIN INDICATORS

### WEIGHT OF SOCIAL ECONOMY IN NATIONAL ECONOMY



Social Economy

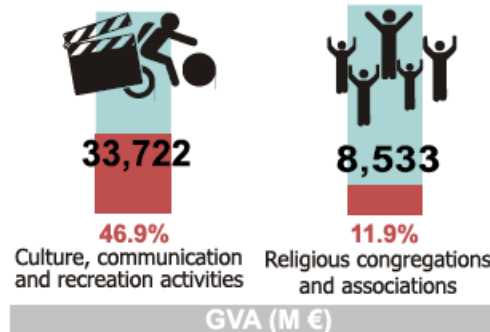
National Economy

## GROUPS OF ENTITIES

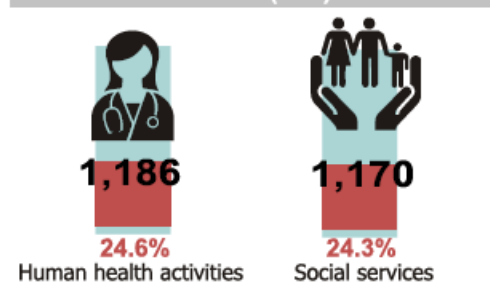
	No.	GVA (M€)	Employees (FTE)
Cooperatives	2,343	604	24,402
Mutual Associations	97	388	4,842
Holy Houses of Mercy	387	597	39,445
Foundations	619	332	14,113
Associations with Altruistic Goals	66,761	2,897	151,779
Community and Self Management Subsectors	1,678	1	305
<b>Total of SE</b>	<b>71,885</b>	<b>4,819</b>	<b>234,886</b>

## MAIN ACTIVITIES

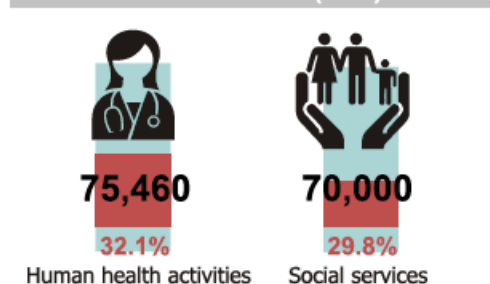
### No.



### GVA (M €)

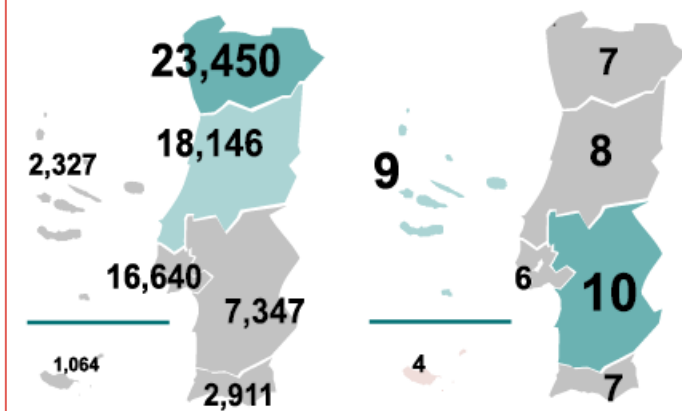


### EMPLOYEES (FTE)

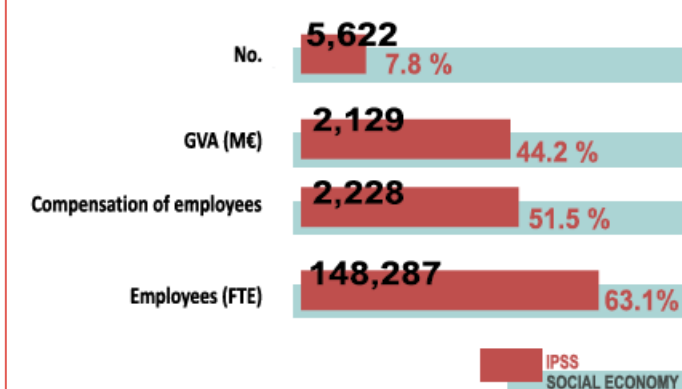


## TERRITORIAL ANALYSIS

### No. / No. / 1 000 Residents

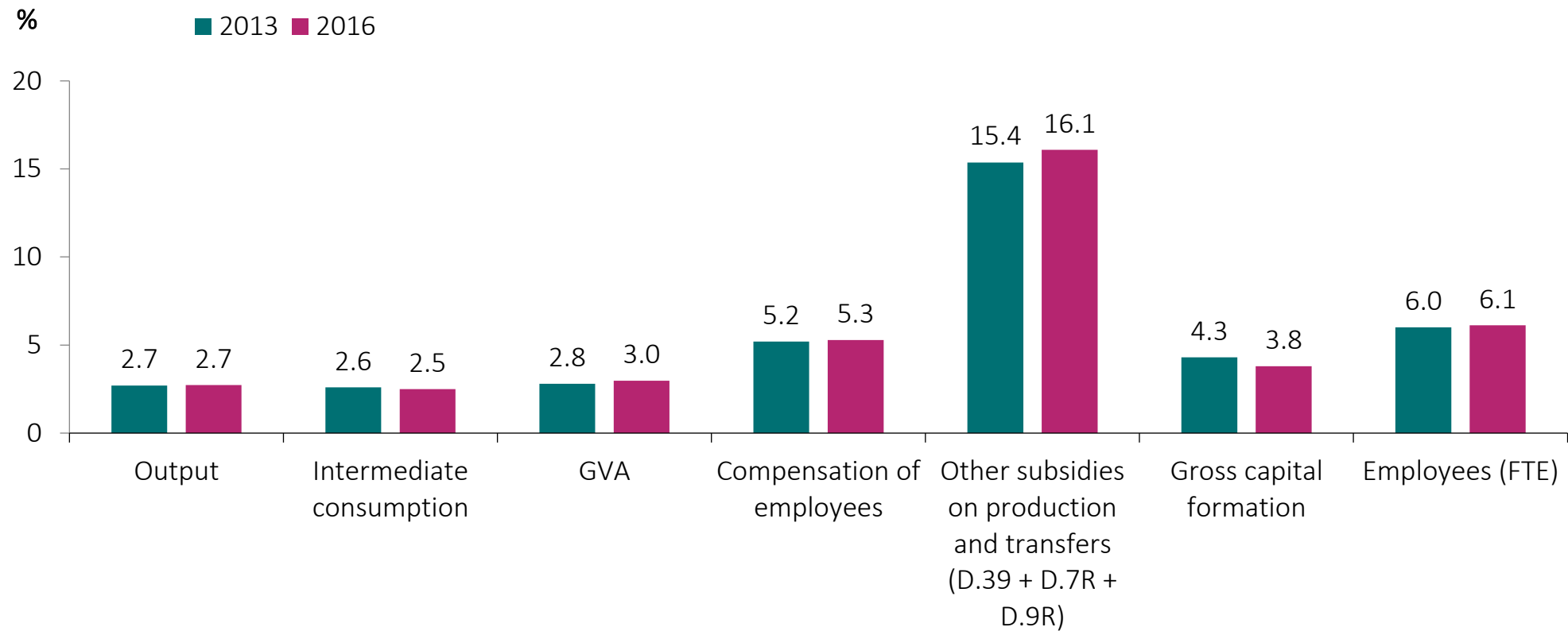


## IPSS IN SOCIAL ECONOMY



# Main results

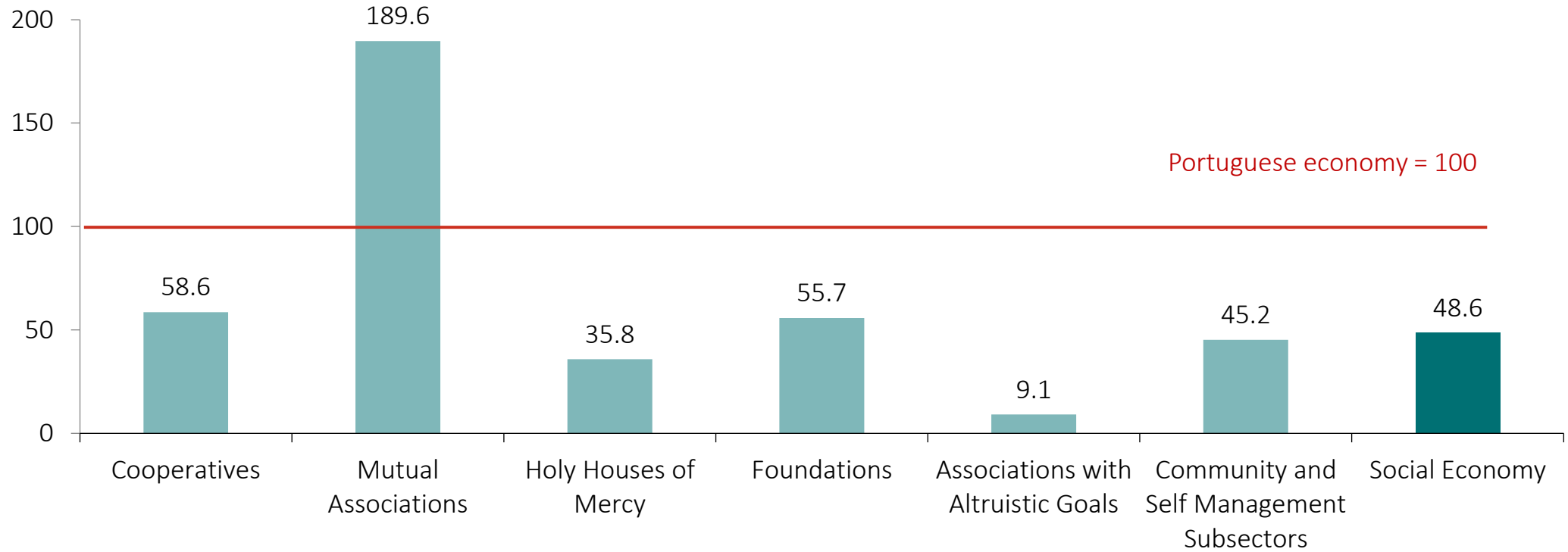
## Social Economy in the Portuguese Economy - main aggregates





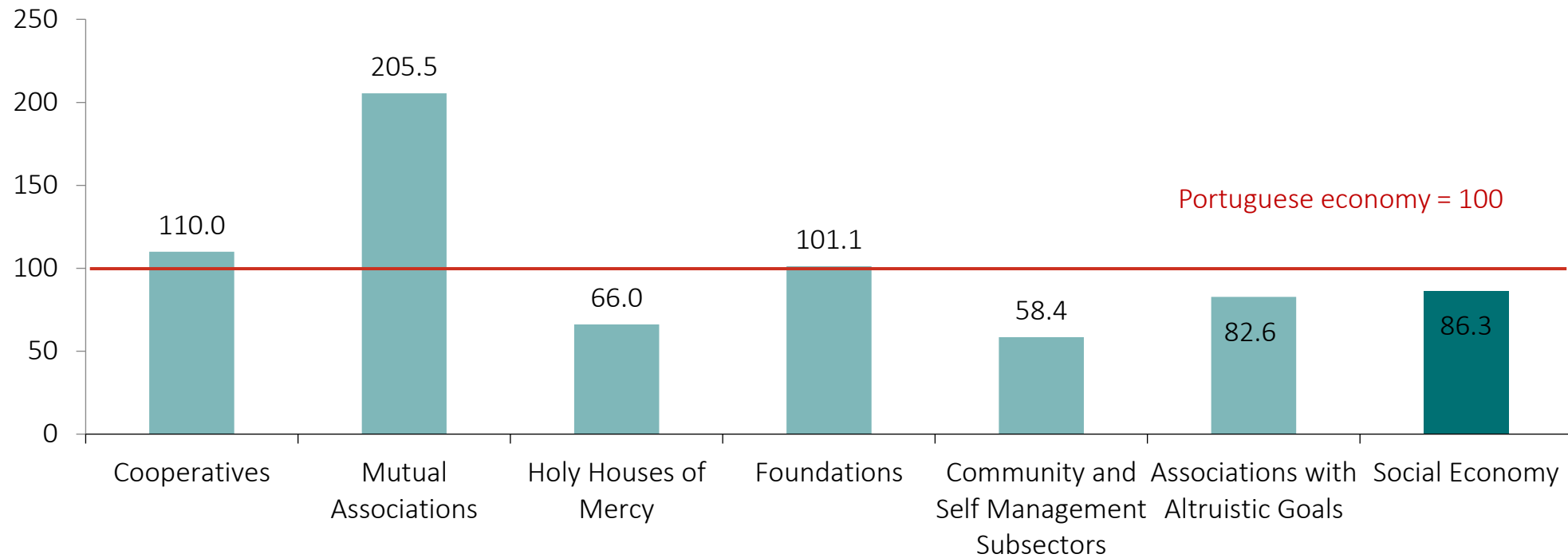
# Main results

GVA/ Employee (FTE), by groups of entities

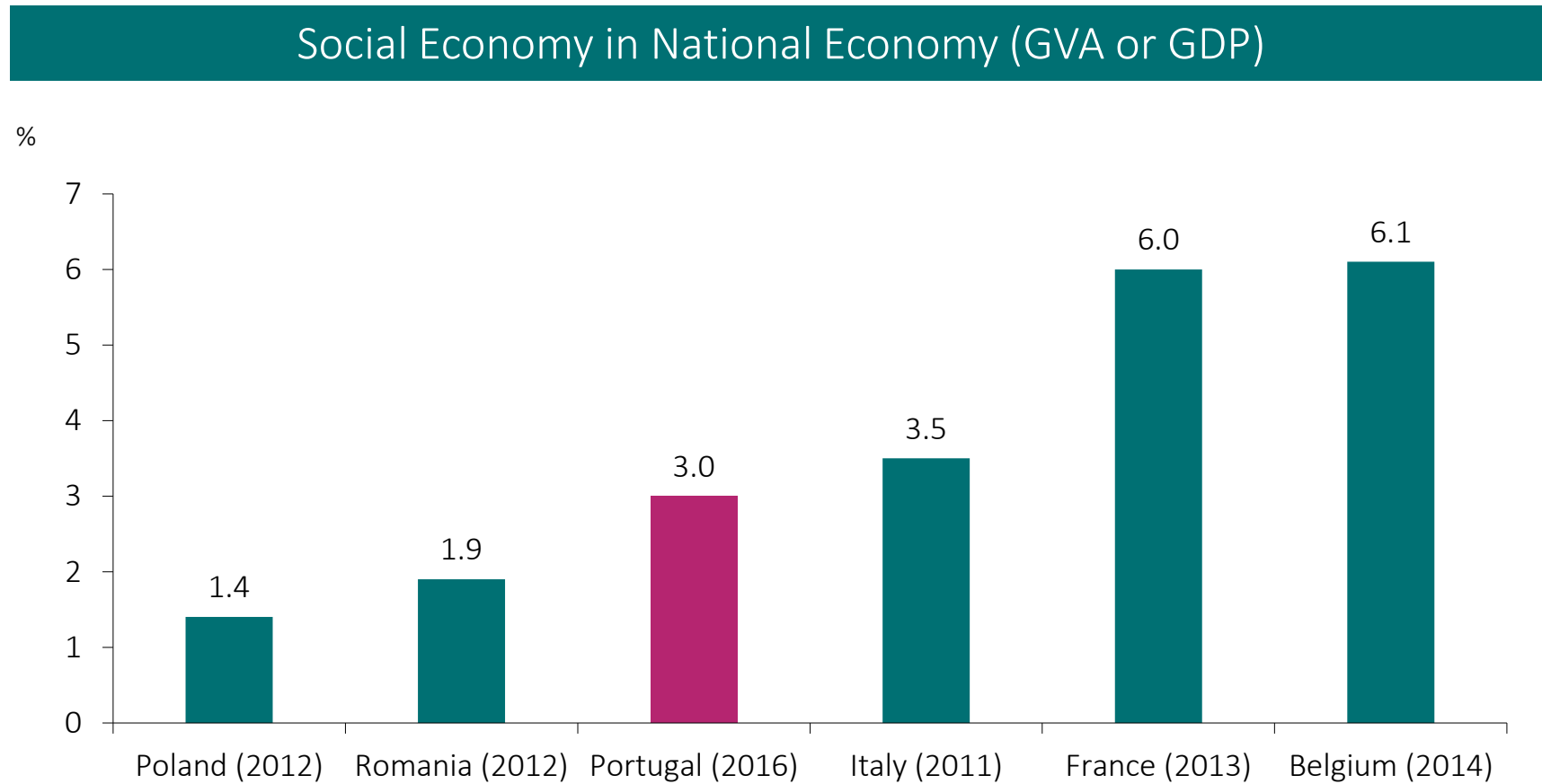


# Main results

## Compensation of Employees/ Employees (FTE), by groups of entities

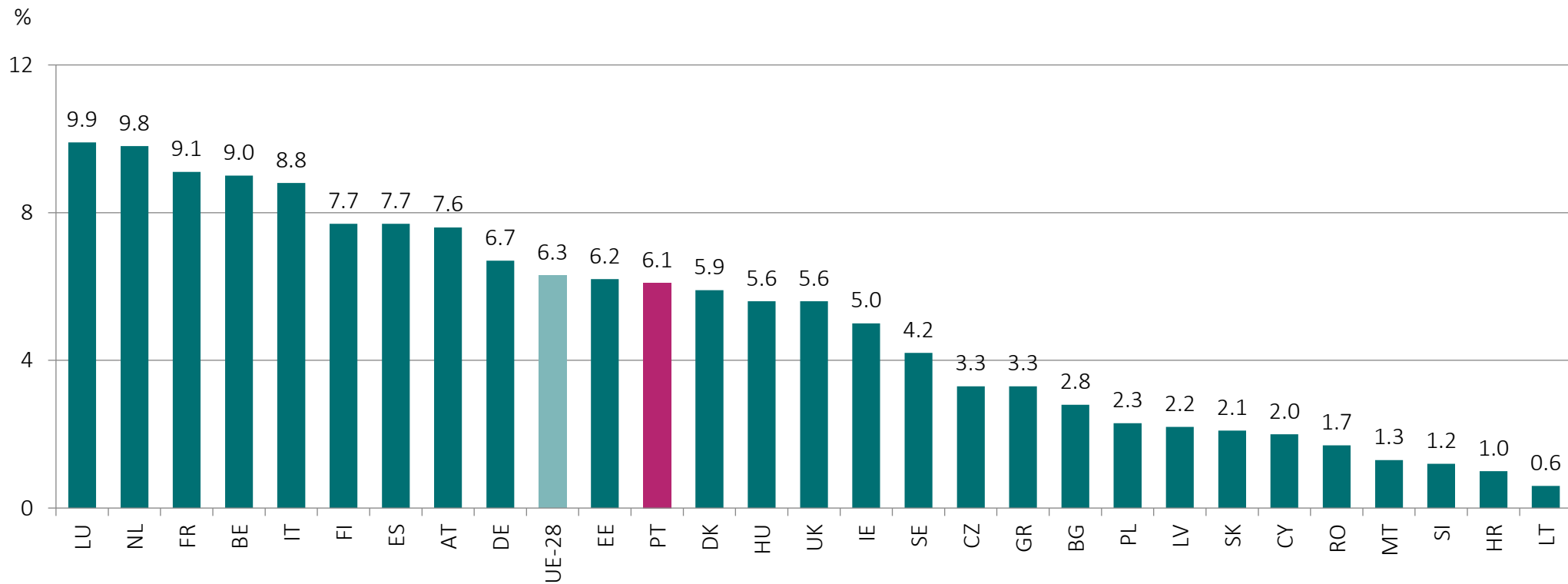


# International Comparisons



# International Comparisons

## Weight of SE employees in total employees of National economy (2014-2015)



Thanks!

More information on [ine.pt](http://ine.pt)

[Social Economy Satellite Account](#)

[Volunteer work](#)

